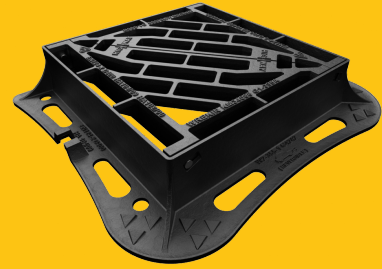


DGHTOD4/4242/KH

Highway D400 3 flange gully grate 425mm x 425mm clear opening with 100mm frame depth



| RANGE | CLEAR OPENING (MM) | BASE OPENING (MM) | OVERALL FRAME (MM) | FRAME DEPTH (MM) | WATERWAY AREA (MM) | OPTIONS |
|---------|--------------------|-------------------|--------------------|------------------|--------------------|---|
| Highway | 425 x 425 | 450 x 450 | 615 x 545 | 100 | 1,250 | <input type="checkbox"/> Enhanced anti-slip coating <input type="checkbox"/> Screw locking |

KEY FEATURES

- ✓ Captive hinges reduce theft risk whilst allowing easy lifting.
- ✓ Mechanical lifting points are provided.
- ✓ Meets CD 534 v0.1.0 (formerly HA 104/09).
- ✓ The enlarged frame corners help to dissipate loads onto the foundation, providing a longer service life and increased reliability.
- ✓ Reversible hinge allows the grating to hinge with the direction of the traffic flow, improving safety.

BS EN 124 Group

3

4

Third party certified

Kitemark

CD526 Hydraulic Capacity

R

Dimensions

Frame shape

Rectangular

Manhole shape

Rectangular

Overall frame (A x B)

615 mm x 545 mm

Clear opening (C x D)

425 mm x 425 mm

Frame depth (E)

100mm

Base opening (F x G)

450 mm x 450 mm

Waterway area

1,250cm²

AVAILABLE OPTIONS

✓ Enhanced anti-slip coating

An enhanced anti-slip coating provides increased anti-slip protection as an addition to the product's own anti-skid properties.

✓ Screw locking

Screw locking deters unauthorised access to the chamber. An extended shank socket set is required to engage the locking screw.

ACCESSORIES

| STOCK CODE | DESCRIPTION |
|--------------------|--|
| PC/UNIFORM/151076 | Uniform chamber adjustment unit 760mm x 100mm x 15mm |
| PC/UNIFORM/251076 | Uniform chamber adjustment unit 760mm x 100mm x 25mm |
| PC/UNIWEDGE/755012 | Uniform support wedge 120mm x 50mm x 75mm |

| STOCK CODE | DESCRIPTION |
|------------|---|
| YPCR/U12.5 | 12.5Kg Unipak rapid curing polyester resin mortar |
| YPCR/U25 | 25Kg Unipak rapid curing polyester resin mortar |
| SCREWLIFT | Manhole cover levelling system |

NOTES

Where 3-flange D400 Gully Grate assemblies are employed, we recommend that they are installed against a kerb, not in an open highway location.

The D400 load capability of these Group 3 products also offers the benefit of making them suitable for exposure to Group 4 traffic types. Where 3-flange D400 Gully Grate assemblies are employed, we recommend that they are installed against a kerb, not in an open highway location. All values stated are nominal within 2.5% tolerance.

1. Wrekin Products Ltd is continually seeking to improve our products and therefore reserves the right to alter product specifications without prior notice.
2. It is the responsibility of all users to satisfy themselves the above data is current.
3. Installation details are available on request.

